

This Brief is Classified:
UNCLASSIFIED

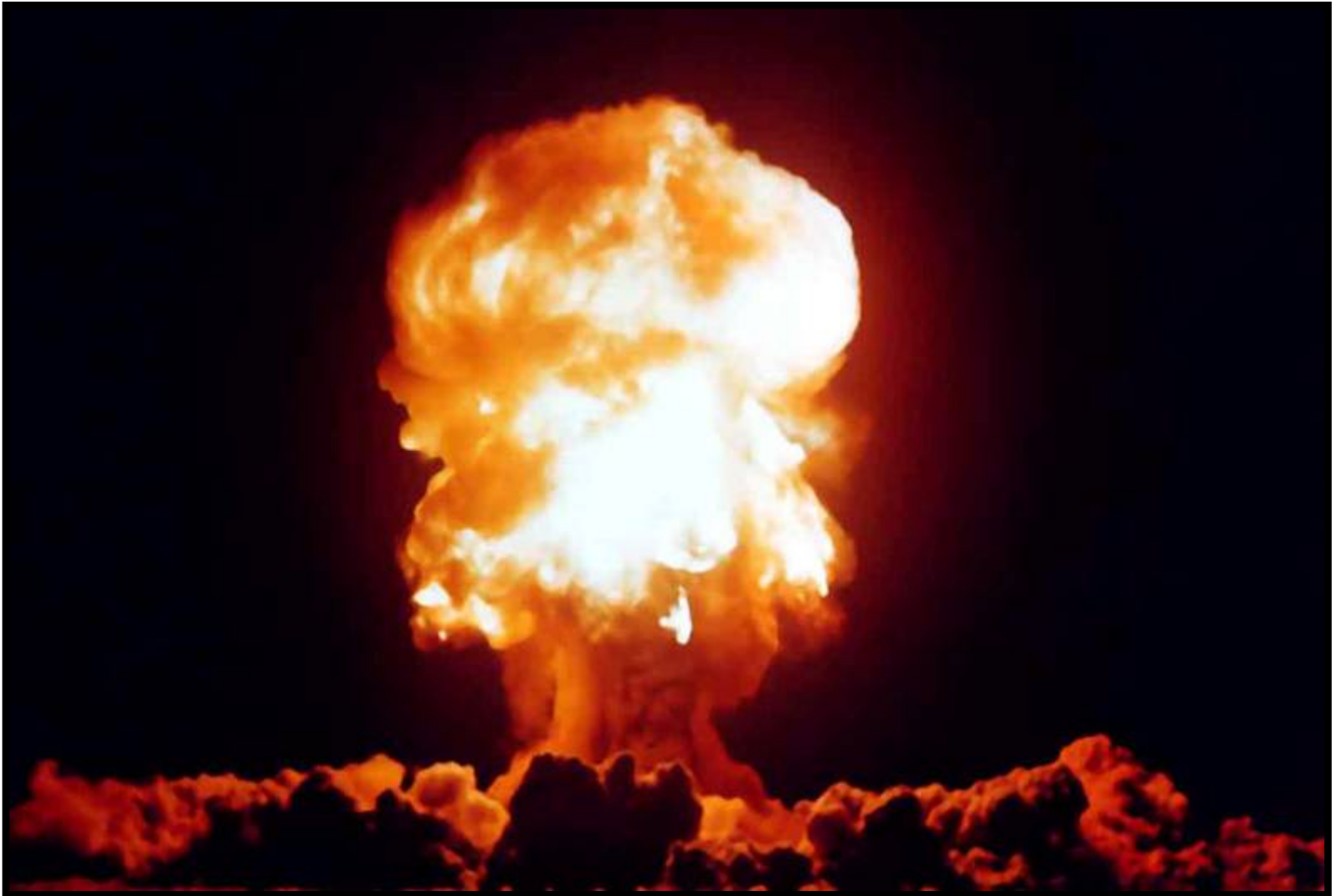


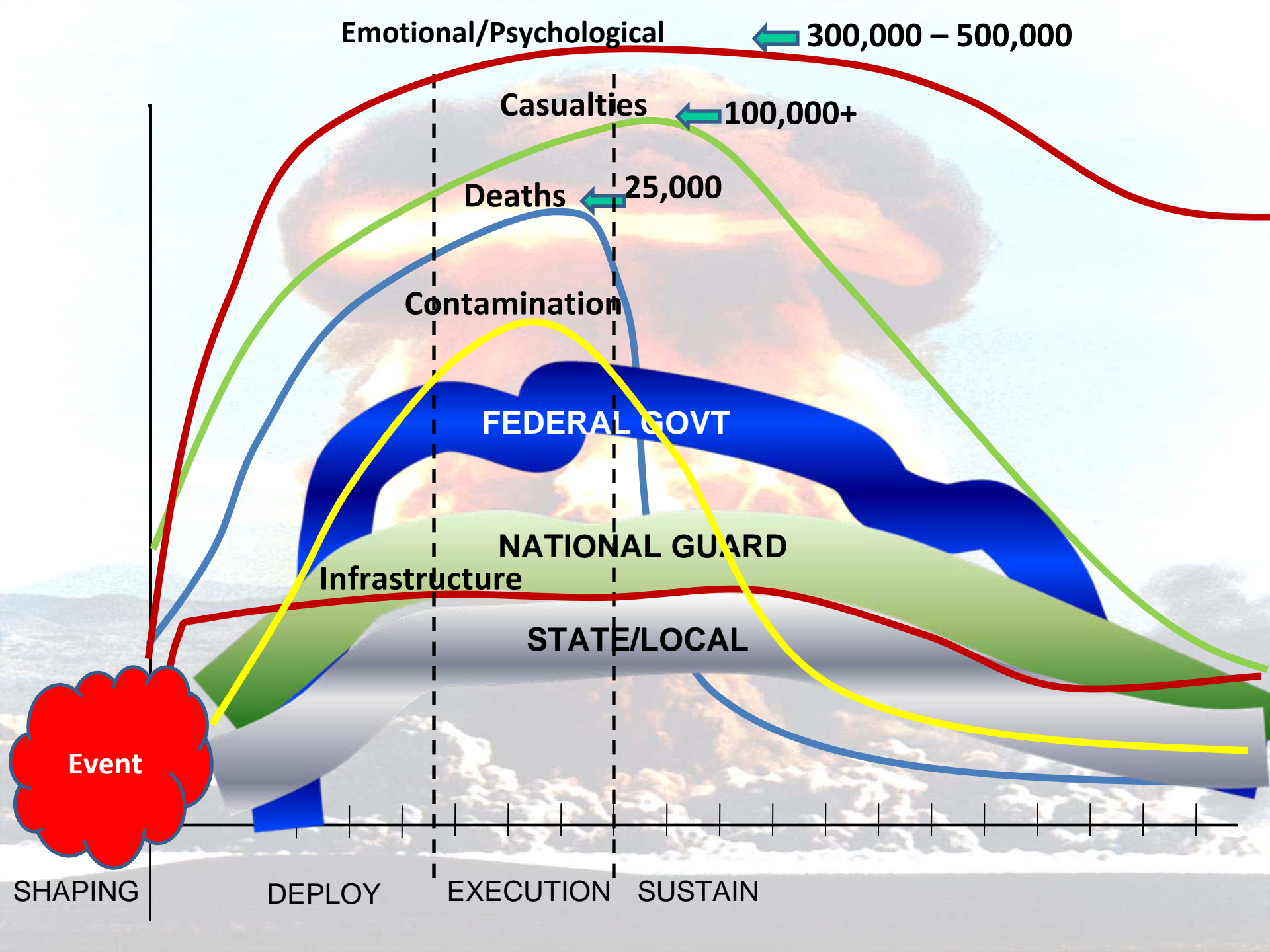
Joint Task Force Civil Support

Command Brief

14 March 2008

Catastrophic Concerns





Emotional/Psychological

← 300,000 - 500,000

Casualties

← 100,000+

Deaths

← 25,000

Contamination

FEDERAL GOVT

NATIONAL GUARD

Infrastructure

STATE/LOCAL

Event

SHAPING

DEPLOY

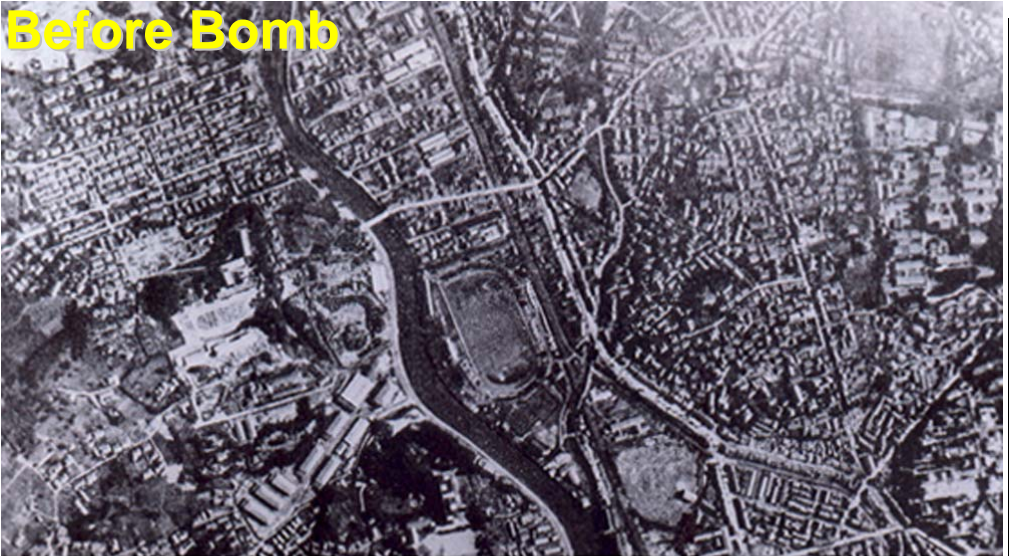
EXECUTION

SUSTAIN

Hiroshima

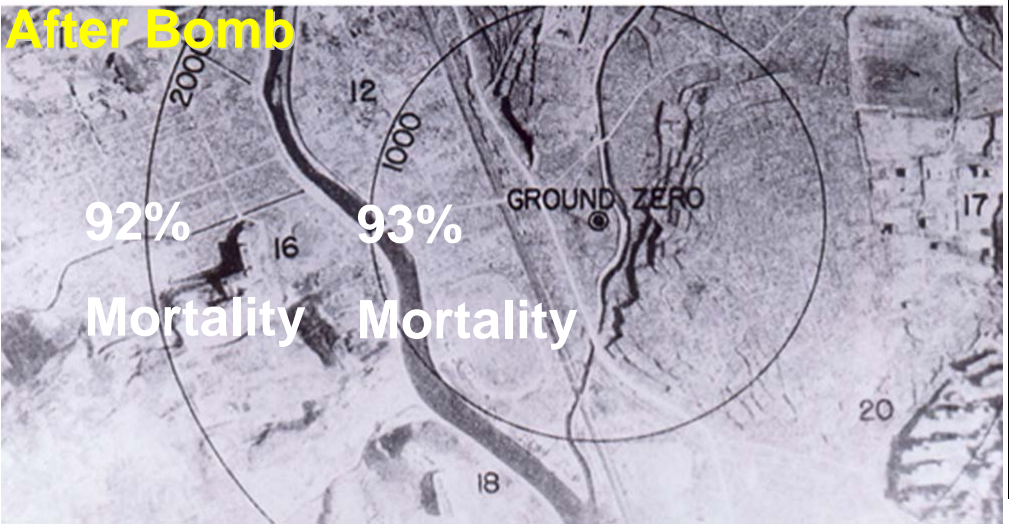


Before Bomb



- ▶ Population: ~255,000
 - Approx size of Norfolk, VA
- ▶ Infrastructure: Complete destruction within 1 mile of center
- ▶ Casualties:
 - 66,000 Dead
 - 69,000 Injured

After Bomb





"In my opinion, the prospects of a future attack against the United States are almost certain. ***It's not a matter of if, but when.***"

Vice President Dick Cheney



...A Matter of When





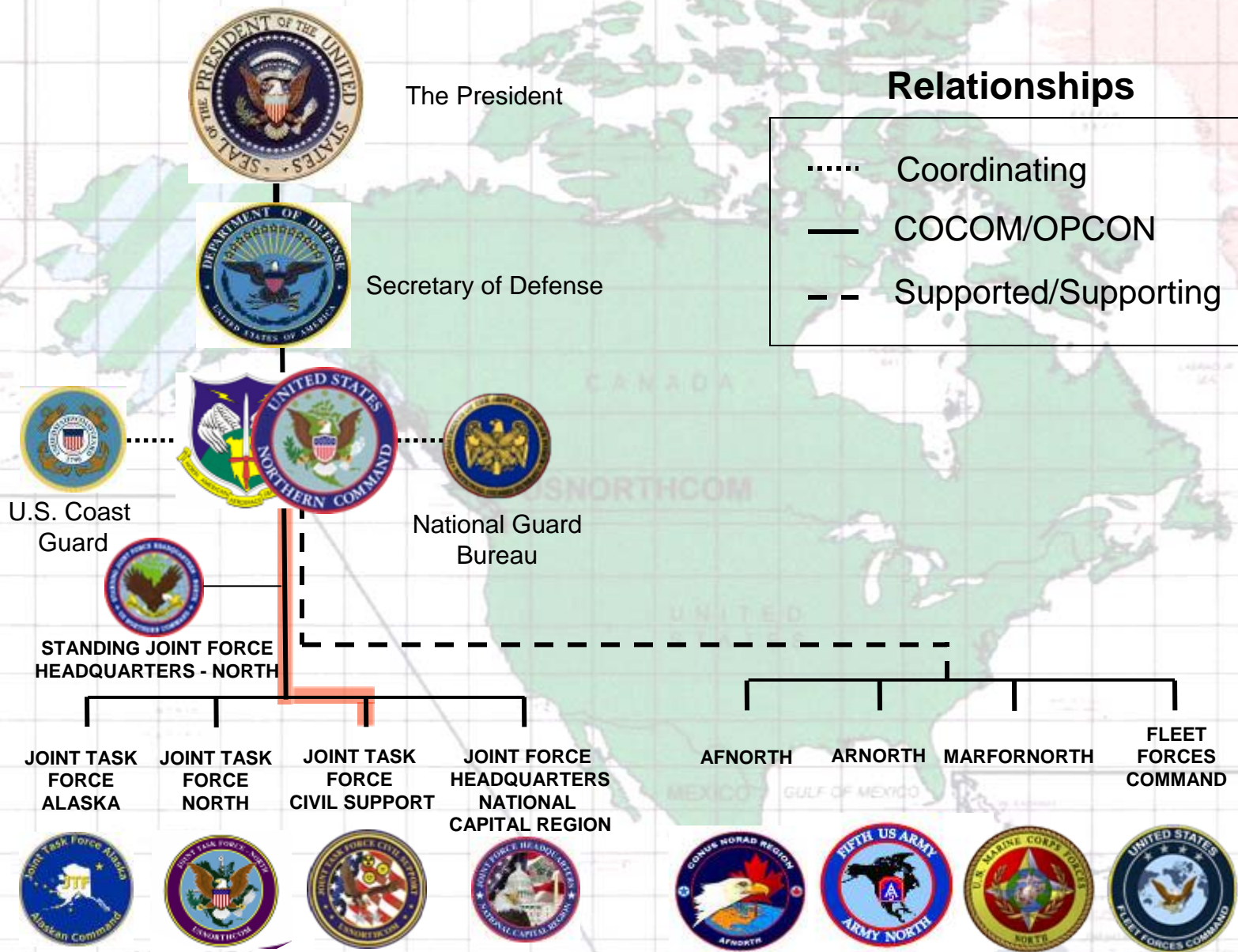
***USNORTHCOM* Mission Statement**

USNORTHCOM *anticipates* and conducts Homeland Defense and Civil Support operations within the assigned area of responsibility to *defend, protect, and secure* the United States and its interests



USNORTHCOM Organization Chart

Geographical Combatant Command





“It is bringing **capability** and **capacity** at the **right time** at the **right place**, not overwhelming the receiving state, but bringing in **something that is sorely needed...the governor is the commander in his or her state.**” “...not too soon, but not a second too long...”

General Victor E. Renuart Jr.
Commander
NORAD & USNORTHCOM



Types of Incidents





JTF-CS Mission

JTF-CS **anticipates, plans and integrates** USNORTHCOM Chemical, Biological, Radiological, Nuclear, and high-yield Explosive (CBRNE) Consequence Management operations and **when directed**, establishes command and control of DoD forces for a CBRNE incident to **assist** local authorities in saving lives, preventing injury, and providing temporary critical life support





JTF-CS Structure



Commander 

Senior Enlisted 

Executive Assistant 

Legal 

Public Affairs 

Medical 

Chaplain 

Deputy Commander 



Chief Of Staff 

J1 Personnel 

J2 Intelligence 

J3 Operations 

J4 Support 

J5 Planning 

J6 Communications 



Area of Responsibility

JTF-CS provides CBRNE planning, exercise, and response support within the U.S., its territories, and possessions

USPACOM

- Hawaii
- Guam
- American Samoa
- Commonwealth of Northern Mariana Islands
- Federated States of Micronesia, Marshall Islands, and Palau

USNORTHCOM

CONUS and Alaska



SOUTHCOM

- Puerto Rico
- US Virgin Islands

- Big Country
- Lots of POC's
- Diverse/Varied

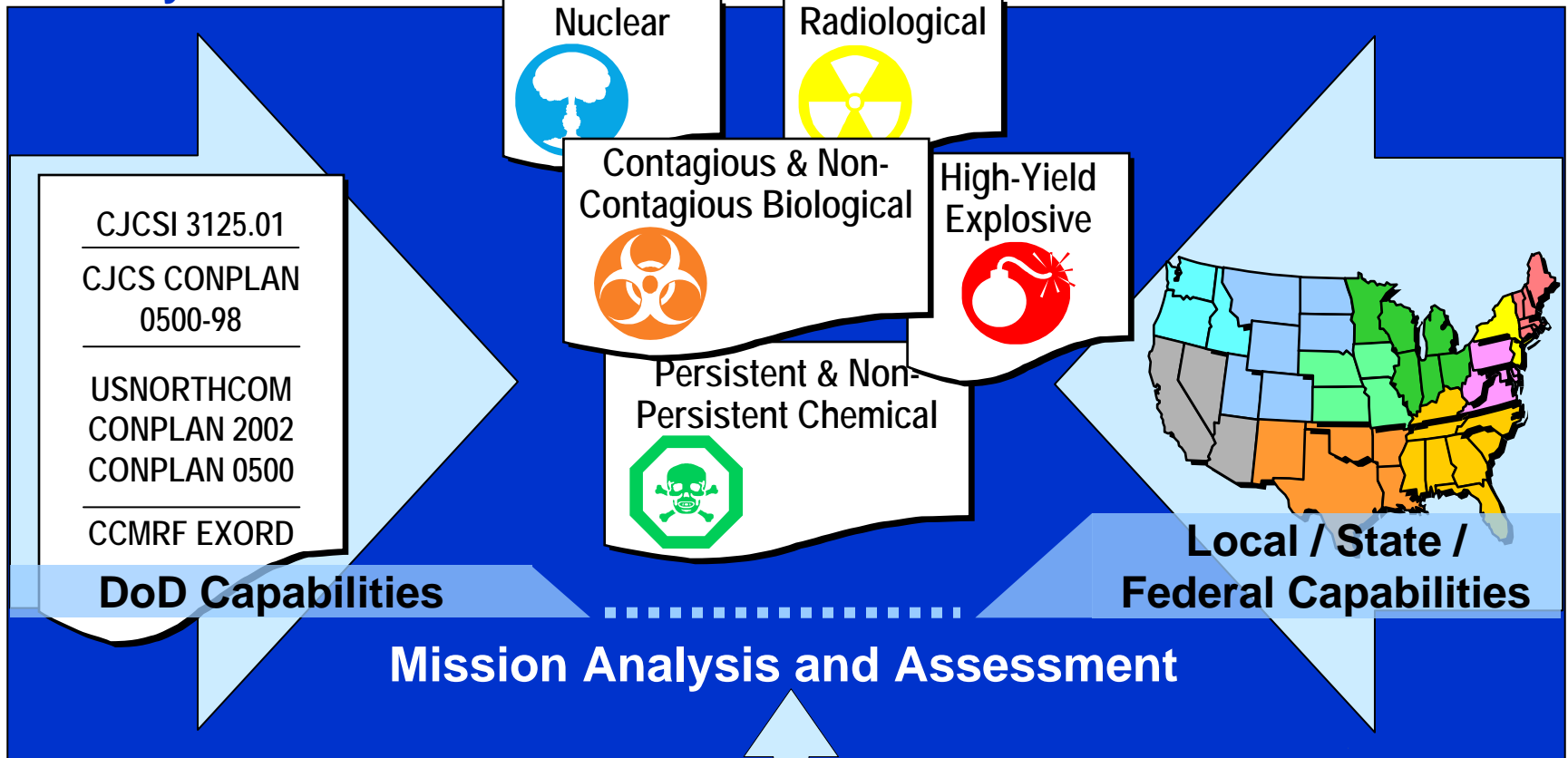


Deliberate Planning - Preparedness

**CBRNE CM Guidance,
Policy and Plans**

**Contingency Planning and
Playbooks**

**National Response Plan
Local and State
Emergency Plans**

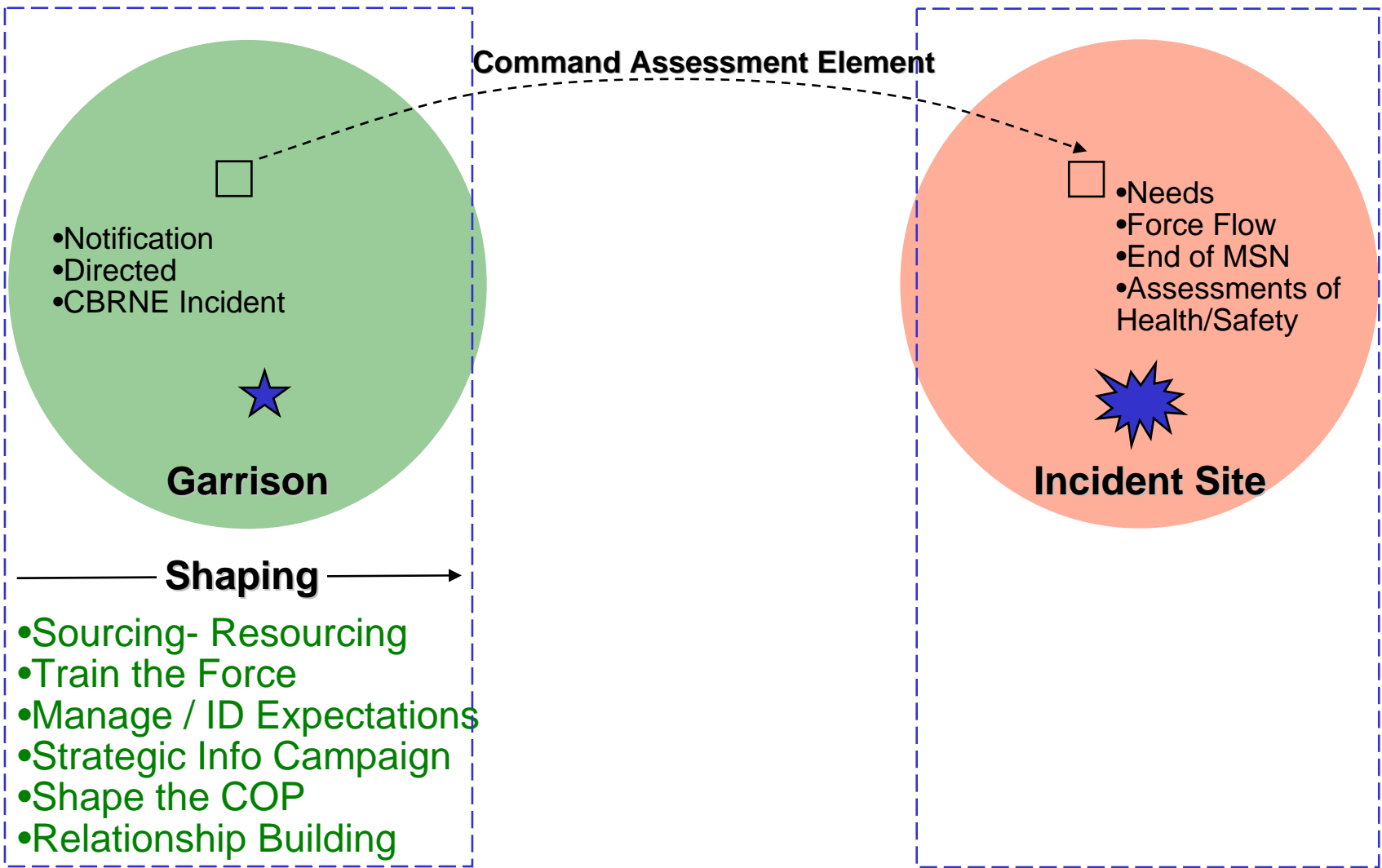


**Area Assessment and GIS
Display and Analysis**

Emergency Plans



UNCLASSIFIED Concept of Operations



Command Assessment Element



★★★★
USNORTHCOM

★★
Command Assessment
Element
JTF-CS

CDR'S
ESTIMATE

- Incident Scope and Magnitude
- Likely LFA RFAs
- Anticipated DoD Tasks
- Proposed CCMRF Modifications & Forceflow
- Potential RFFs
- JOA and BSI Recommendations

PFO
U.S. DEPARTMENT OF
HOMELAND SECURITY

FCO
FEDERAL EMERGENCY MANAGEMENT
AGENCY

ESFs

Governor

★★
TAG

State
EOC



JTF-CS
OPS Center



JTF-CS
Joint Planning Group

--- coordination
— command



Joint Planning Augmentation Cell (JPAC)

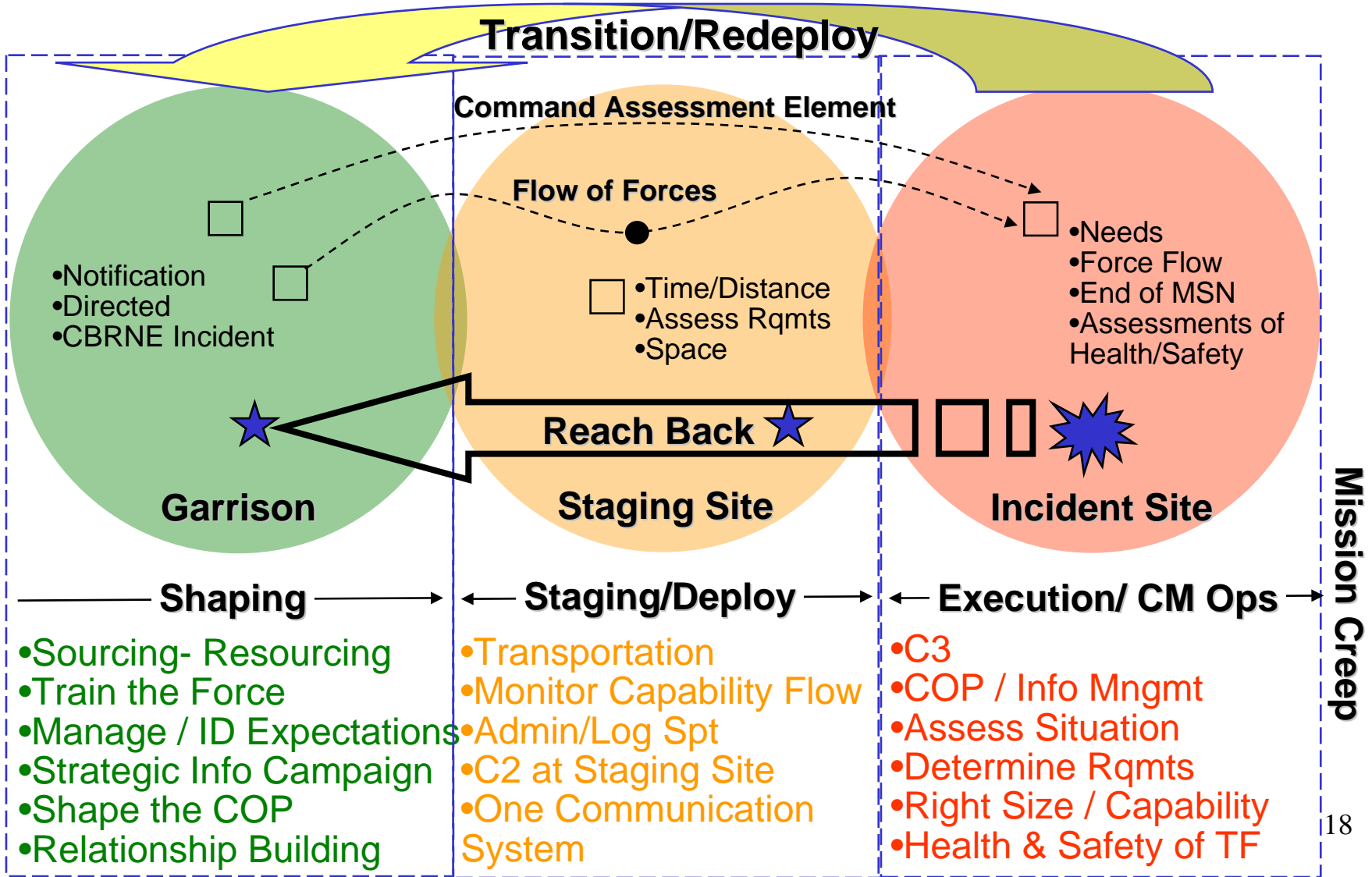
UNCLASSIFIED

MISSION: When directed, the JPAC provides exportable planning expertise for CBRNE consequence management operations.

- 2 deployable teams (4 hours)
- Each team normally has 4 members:
 - 04 / 05 Team Chief
 - Nuclear Biological Chemical / Hazardous Materials planner
 - Logistics planner
 - Medical planner
- JTF-CS provides expertise and reach back
- Supports all NSSEs



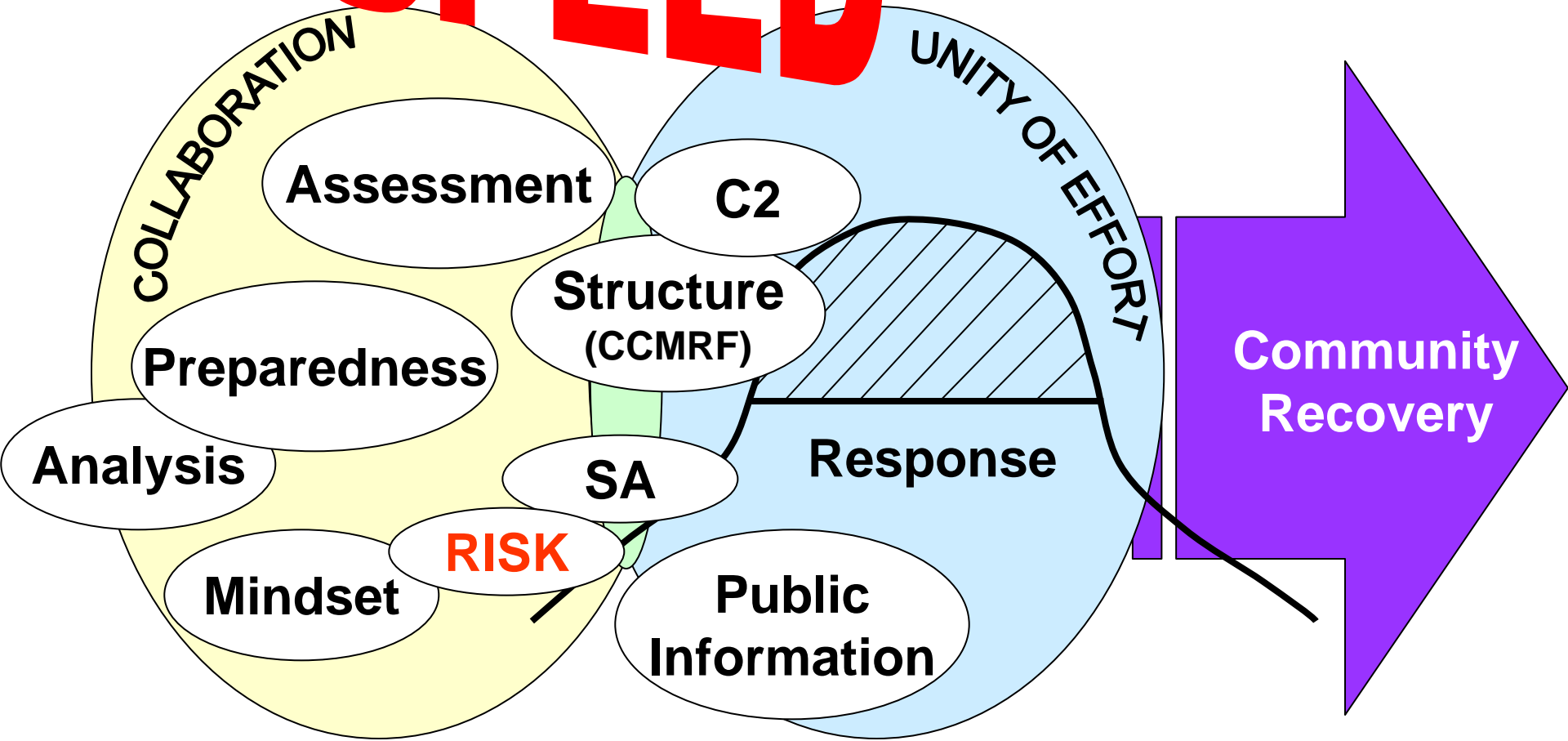
Concept of Operations



“Center of Gravity”



SPEED

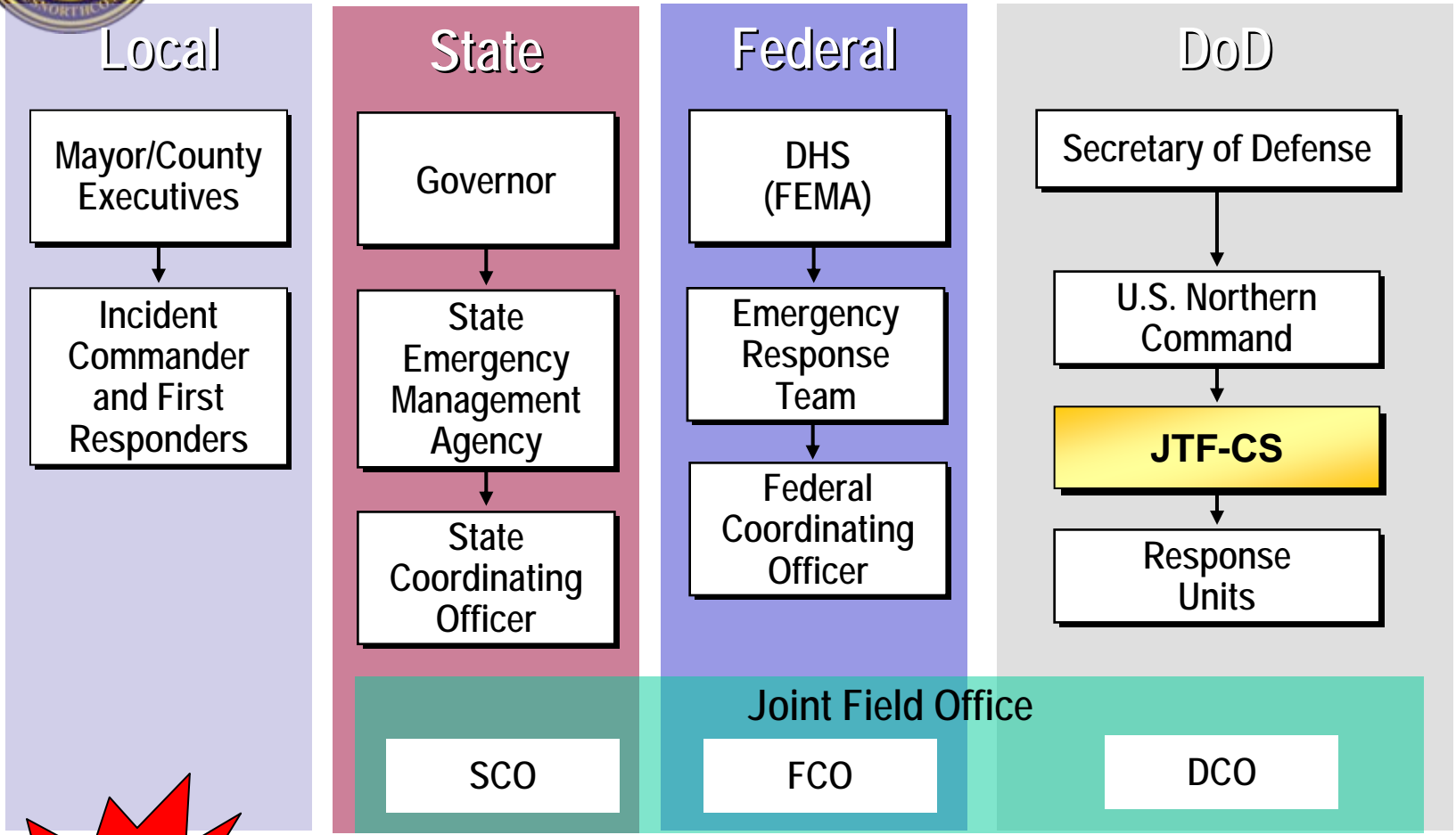


LAW / POLICY / REGULATION / PROCESS



National Incident Management

I
N
C
I
D
E
N
T



City/County Request Aid from State → DHS Implements NRP → JTF-CS Responds

Timetable Based on Events



“...find the right way to put together **capabilities** of the **federal government** in support of the **capabilities of the state**...”

General Victor E. Renuart Jr.
Commander
NORAD & USNORTHCOM





CCMRF Capabilities

JTF-CS provides command and control, and coordination for the following types of tasks and requirements



HQ Augmentation

- Tech Aug
- Mapping
- Modeling
- Public Affairs



TF Response
Incident Site Support




- Coord w/Local EM Director
- Extraction of Injured
- **Decontamination**
- Surveying, Monitoring, and Marking of Incident Site
- Security and Protection

TF Medical
Medical Support



- Triage /Treatment
- Hospital Augmentation
- Agent Technical Support
- Veterinary Support
- Prophylaxis/Immunization
- NDMS support

TF Support
Logistics Support



- General Support Log
- JRSOI
- Displaced Populace
- Mortuary Affairs
- Transportation
- Engineering

TF Aviation
Aviation Support



- A2C2 (Rotary)
- Gen Avn Support
- Search and Rescue
- CASEVAC/MEDAVAC
- Aviation Maintenance



“...look for ways to continue to **partner** to make the job of the states easier when it comes time to respond within their state...”

General Victor E. Renuart Jr.
Commander
NORAD & USNORTHCOM



Take Aways



- **Swap Business Cards before the “event”**
- **Relationships**
- **JTF-CS**
 - **Today’s only standing Joint HQ dedicated to anticipating, planning, integrating, and responding to CBRNE events**
 - **24/7/365 → Rapid Response / Heightened SA**
- **JTF-CS responds to requests and directives**
- **“Not if...but when”**

Questions?

